

▶ THOUGHT  
#24,876

# Quite simply a magical place



Museum Galleries for Hire

**ramm**  
▶ Home to a million thoughts



# Welcome

Welcome to the Royal Albert Memorial Museum & Art Gallery (RAMM) Exeter's most visited cultural attraction.

Described by Historian Dan Cruikshank as “one of the most appealing treasures in Britain.” The rich variety of collections amassed over the last 150 years at RAMM are available to be enjoyed as part of RAMM’s venue hire offer.

Our galleries combine ornate, high Victorian architecture, with modern, clean lines, to provide a memorable location for any event from large receptions and private dining experiences, to seminars and away days where delegates can enjoy our collections as part of the RAMM experience.

Because we appreciate that every event is unique and has its own set of priorities we treat each booking as an opportunity to create a tailor-made event managed to the highest standards. All our spaces include an integral a/v package and catering is provided by one of our hand-picked specialists to ensure the menu is a perfect fit to the event.

Bookings for groups from 15 to 500 are welcome 7 days a week.



► Reception in gallery 20



**“...many thanks to you and the whole RAMM team... the evening was a great success and a wonderful launch for our year”**

**Claire Kennedy, Curator**  
TEDx Exeter

► Front cover: RAMM’s Queen Street entrance

# Contents

Courtyard Gallery – The Atmospheric	<b>4 to 5</b>
Gallery 20 – The Contemporary	<b>6 to 7</b>
Garden Room – The Intimate	<b>8 to 9</b>
York Wing A & B – The Everyday	<b>10 to 11</b>
Space overview	<b>12</b>
Approved Suppliers	<b>13</b>
Contact Info	<b>14</b>



# Courtyard Gallery

## The Atmospheric

This delightfully atmospheric gallery in the heart of the museum is home to RAMM's Core Wall, a double-height series of illuminated glass cells, each containing an object and based on a Victorian cabinet of Curiosities.

The Courtyard gallery is available for evening functions and is usually approached from RAMM's Gothic Victorian Queen Street entrance.

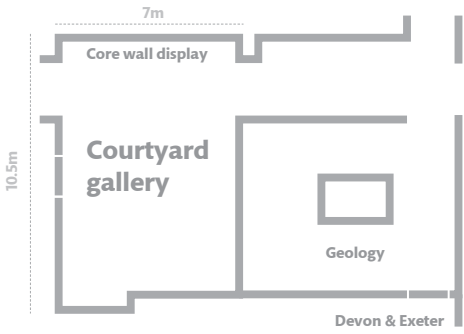
It can be combined with the Geology and Devon & Exeter galleries to create a suite of galleries and is particularly suited to drinks and canape receptions or private dining experiences.



► Courtyard gallery reception



► Geology gallery, canapes by Lyons Catering, Devon & Exeter galleries



## The Courtyard Gallery – The Atmospheric

### Venue Hire Fee

From £800 excl vat

Please note that catering and associated equipment costs are not included in the venue hire fees. Quotes should be obtained from one or more of our approved suppliers (see page 13)

### Facilities

Our facilities package includes:

- Cheltenham Chairs
- Tables
- Wifi
- Coloured uplighters
- Modular staging system

This gallery can be combined with our Geology and Devon & Exeter galleries if required to create a suite of spaces.

### Capacities

Drinks & canape receptions	<b>100</b>
Private Parties	<b>100</b>
Banqueting	<b>60</b>
Wedding Receptions	<b>100</b>



# Gallery 20

## The Contemporary

A spacious, flexible, contemporary fine art gallery, with a changing exhibition programme.

This gallery can be hired during the day or evening and is usually accessed from the garden entrance at RAMM.

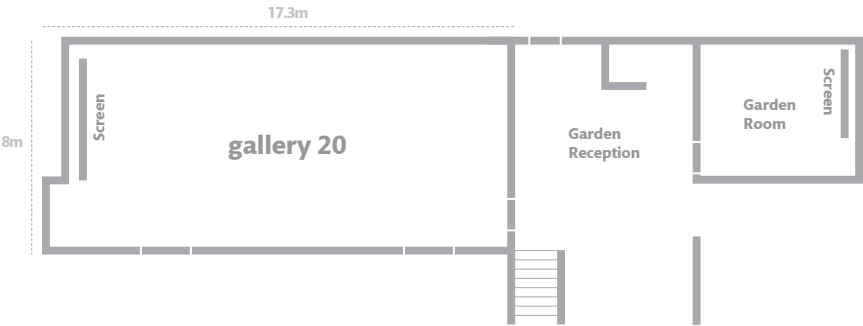
It is available either on its own or with the garden reception and garden room to create a suite of rooms flanked by Exeter's Roman wall and lawn to which guests have access (weather permitting).



► Dinner in gallery 20



► Informal talk, debate in gallery 20



## Gallery 20 – The Contemporary

### Venue Hire Fee

From £400 excl vat

Please note that catering and associated equipment costs are not included in the venue hire fees. Quotes should be obtained from one or more of our approved suppliers (see page 13)

### Facilities

Our facilities package includes:

- Conference or Cheltenham Chairs
- Tables
- Air conditioning (constant at 18-20°C)
- Cinema size screen
- Ceiling mounted projector
- Laptop
- Lectern with microphone
- 2 Hand held mics
- Wifi
- Modular staging system

Additional sound equipment can be arranged on request.

### Capacities

Day conferences (cabaret)	80
Lectures	140
Drinks & canapes receptions	200
Banqueting	120
Wedding receptions	120



# Garden Room

## The Intimate

This boardroom is a new addition to RAMM, accessed from the garden entrance it adjoins the museum lawn and Exeter's Roman wall.

It is available with the RAMM Reception area if additional catering space is required and can also be used in conjunction with gallery 20 as a break-out space or as a green room for visiting speakers or musicians.



► Drinks in the garden reception with Penelope lively and Lawrence Sail



► Garden entrance, garden room

## Garden Room – The Intimate

### Venue Hire Fee

Half day £200 excl vat  
Full day £400 excl vat

### Facilities

Our facilities package includes:

- Board table and chairs OR
- Conference chairs
- Ceiling mounted projector
- Screen
- Laptop (if required)
- Wifi
- Flip charts
- Opening window

### Capacities

Boardroom	16
Lecture	35



# York Wing Rooms A&B

## The Everyday

A duo of affordable, cheerful rooms ideally suited to functional gatherings, where meeting in a gallery is not essential but being in a museum environment is. Both spaces have lots of natural light and large sash windows.

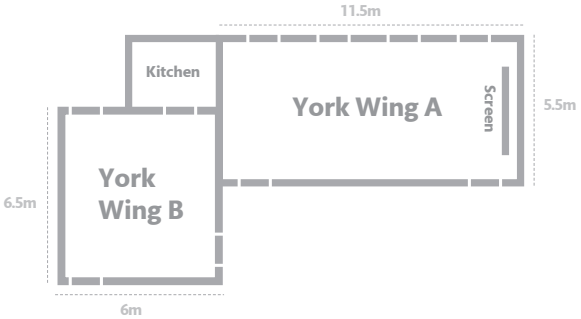
**Room A** is ideally suited to hosting meetings, with **Room B** providing an adjoining space for catering breaks and lunches. These spaces are on the ground floor of the museum away from public galleries and have their own dedicated lavatory facilities.



► Lunch by Pickle Shack



► Corridor to York Wing Rooms, York Wing room A



## York Wing – The Everyday

### Venue Hire Fee

Half Day £150 excl vat  
Full Day £300 excl vat

Please note that catering and associated equipment costs are not included in the venue hire fees. Quotes should be obtained from one or more of our approved suppliers (see page 13)

### Facilities

Our facilities package includes:





- Conference Chairs
- Trestle or banqueting tables
- Wall mounted screen
- Ceiling mounted projector
- Lectern
- Laptop if required
- Wifi
- Portable audio loop

### Capacities

Lectures	50
Conference	40
Classroom	30
Reception	70



# Space overview

	 Lecture	 Banqueting	 Reception	 Conference	Availability
Gallery 20	140	120 12 tables of 10	200	80 10 tables of 8	day/eve
Courtyard	n/a	60 5 tables of 12	100	n/a	eve only
Garden Room		n/a		16 Boardroom	
York Wing A&B	50		70	40	day only



► Gerald the giraffe and friends

# Approved suppliers

## Catering

### Pickle Shack

Jodie Sawatski, Director  
Unit 26  
Greendale Business Park  
Sidmouth Road  
Woodbury Salterton  
Exeter EX5 1EW

**T** 01395 488132  
**E** [jodie@pickleshack.co.uk](mailto:jodie@pickleshack.co.uk)  
[www.pickleshack.co.uk](http://www.pickleshack.co.uk)

### Dartmoor Kitchen

Claire Horne, Events Manager  
23 Bittern Road  
Sowton Industrial Estate  
Exeter  
EX2 7LW

**T** 01392 705199  
**E** [enquiries@dartmoorkitchen.co.uk](mailto:enquiries@dartmoorkitchen.co.uk)  
[www.dartmoorkitchen.co.uk](http://www.dartmoorkitchen.co.uk)

### Posh Nosh

Sophie White  
Units A&B Tremlett's Quay  
Odhams Wharf  
Exeter EX3 0PB

**T** 01392 444877  
**E** [info@posh-nosh.co.uk](mailto:info@posh-nosh.co.uk)  
[www.posh-nosh.co.uk](http://www.posh-nosh.co.uk)

### Lyons Catering

Ginny Lyons  
Rednal  
2 Thornton Hill  
Exeter EX4 4NS

**T** 01392 438328  
**M** 07581 228300  
**E** [glyonscat@gmail.com](mailto:glyonscat@gmail.com)  
[www.lyonscatering.com](http://www.lyonscatering.com)

## Sound systems

### Stage Engage

Christian Ablett  
The Shippon  
Unit 1  
Old Wheatley Farm  
Exeter EX4 2HA

**T** 01392 927888  
**E** [contact@stageengage.com](mailto:contact@stageengage.com)  
[www.stageengage.com](http://www.stageengage.com)



# Contact Information

**To book an event, or for an informal discussion regarding your requirements please contact:**

**Jacqui Channon,**

Venue Hire Officer

**T** 01392 265384

**E** [jacqui.channon@exeter.gov.uk](mailto:jacqui.channon@exeter.gov.uk)

All bookings are subject to our standard terms & conditions which are available on request.

Royal Albert Memorial Museum  
& Art Gallery (RAMM)  
Queen Street, Exeter EX4 3RX

[www.rammuseum.org.uk/  
visiting-us/how-to-get-here/](http://www.rammuseum.org.uk/visiting-us/how-to-get-here/)



Supported using public funding by  
**ARTS COUNCIL  
ENGLAND**