

27 WAIST 35 HIPS

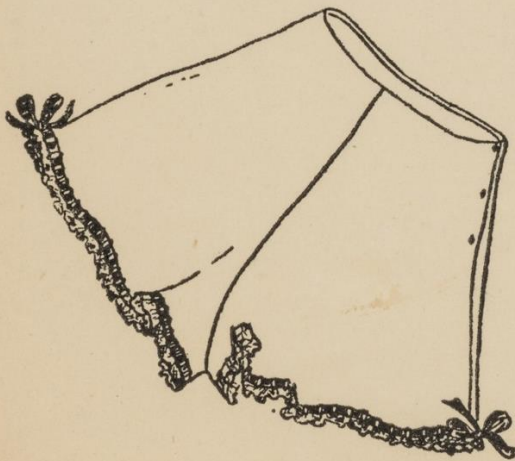
NO. 6321

1/9



PATTERNS CANNOT BE EXCHANGED

VOGUE PATTERN



A

B

©Vogue

"EASY-TO-MAKE"

PANTIE

CUT IN

SIZES 25-27-28-30-32-34

Fabric Requirements

Suitable Materials

Sketches of the Pieces

All this important information will be found on the instruction chart inside. You need *not* take the chart out of the envelope—merely slip it out part way. The information you want is printed on the outside fold of the chart.

Vogue Patterns—for lasting values

Today each Vogue Pattern is designed by Vogue's experts—the most carefully trained fashion staff in the world—for its *permanent* values. Vogue Patterns are not just the fashions of a season, clothes made from them retain their style and attractiveness until they are literally worn out. And, as always, you are assured of getting the cut and fit which the name of Vogue implies.

VOGUE COUTURIER DESIGNS are portents of fashion. They come to you so early in the history of their particular trend that after months, even years, their smartness remains. You will find that each theme has been emphasized with a great respect for line and detail. The finished Couturier Design is a tribute to the woman who wears it.

VOGUE PATTERN SERVICE

THE CONDÉ NAST PUBLICATIONS LTD.,

229-231, KENSINGTON HIGH STREET, LONDON, W.8.

70 28 JUL 1949

BE SURE center front and center back MARKING THREAD LINES (see Fig. 3, Practical Cutting and Marking Instructions) hang PERPENDICULAR when fitting. This SHOWS that GRAIN on garment is TRUE and BALANCED as it should be.

PIN and BASTE all seams.

DO NOT STITCH until garment has been tried on and adjusted to your figure.

STRETCH AND EASE edges as indicated. EASE means to FULL one side to the other.

MAKE SHOULDER PAD, if one is to be used, and pin into garment as directed before the basted fitting.

PRESS each section thoroughly as the work progresses—DO NOT LEAVE for one final pressing. Always press on wrong side.

Cover SILK or WOOL with dry heavy press cloth. Dampen cloth evenly with sponge and press with rather hot iron.

Press VELVET or VELVETEEN over velvet board, touching iron lightly to fabric. Steam finished garment.

Do not dampen METAL fabrics of any kind. Dampness tarnishes threads. Press with rather hot iron only.

Press RAYON same as silk but test a small piece first; dampness may spot it. Avoid placing a hot iron directly on the fabric as it may stick to the iron and shrivel.

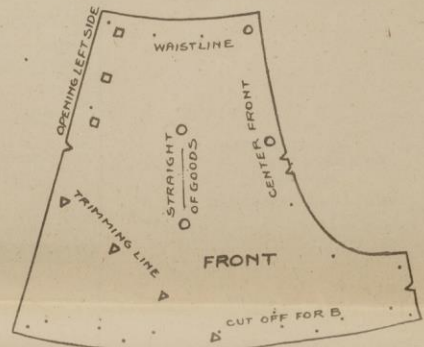
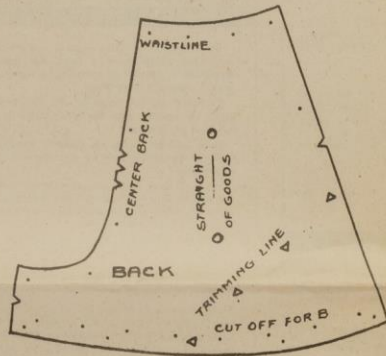
PICTURE DIAGRAM

This diagram identifies each piece of the tissue pattern. Compare carefully before cutting.

All seam lines indicated by small perforations (. . . .)

Match corresponding notches (> or >>>) and perforations (□ or ▽). Large (○) perforations indicate fold of material.

THIS PATTERN CONTAINS 2 PIECES



NO. 6321

IMPORTANT: SEAM ALLOWANCE ON ALL VOGUE PATTERNS IS 5/8"

ENTIRE ALLOWANCE MUST BE USED IN ALL CASES. FOLLOW CAREFULLY ALL DETAILED INSTRUCTIONS ON THIS SHEET



6321

A - SEAMS

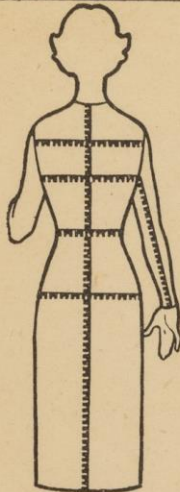
1. Seams FRONTS at center front matching VV.
2. Seam BACKS at center back matching VVV.
3. Seam right side matching V.
4. Seam left side below V only; clip at end of stitching and press open.
5. Seam at crotch matching V and seams.

B - OPENING - UPPER EDGE

- Cut straight strip 2" wide and twice the length of side opening.
1. Seam strip to opening edges, as illustrated, right sides together, taking up 1/4" seam only, on strip.
 2. Turn under 1/4" on other edge of strip, fold and hem over seam inside. Press.
 3. Turn extension under on front edge and baste.
 4. Stitch a 1" strip of bias to upper edge, taking up 1/4" seam only, on bias.
 5. Turn facing inside and baste edge. Turn in 1/4" and blind-stitch to pantie, making facing 1/2" wide finished and finishing off ends.
 6. Work buttonhole at top □ at opening, cutting from □ crosswise parallel to top.
- Work buttonholes at other □'s cutting up and down from □'s parallel to opening edge working through continuous fold.
7. Mark for and sew buttons to top of continuous fold.

C - LOWER EDGES OF LEGS

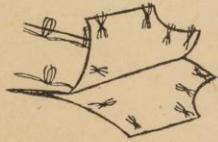
- View A:—Roll-hem lower edges of legs as follows.
1. Machine-stitch lower edge 1/4" below seam-line and trim 1/8" below stitching.
 2. Roll between fingers and hem, keeping stitches in the roll.
 3. When lace is used roll hem between Z-A at inside of leg only.
 4. Pin lace to pantie between A lines and attach using applique stitch.
 5. or stem stitch, as illustrated.
 6. Trim away material under lace 1/4" from stitches.
 7. View B:—Picot lower edges of legs 5/8" above cut edges.
 8. Whip 1/2" beading to picoted edge, seaming beading at inside leg seam.
 9. Whip 1/2" lace to edge of beading, seaming lace at inside leg seam, easing lace to beading.
 10. Run ribbon through beading and tie in bow knot at outside leg seam.



MEASUREMENTS. Important.

Pin pattern pieces together, try on, and adjust before cutting material. To take measurements on figure, pass tape round the fullest part of bust, keeping tape a little higher at back. Measure waist line and 8 ins. below measure hips. For back length, measure from nape of neck to waist, and from then on to the required length. Measure across back 4 ins. below nape of neck. Take under-arm sleeve length.

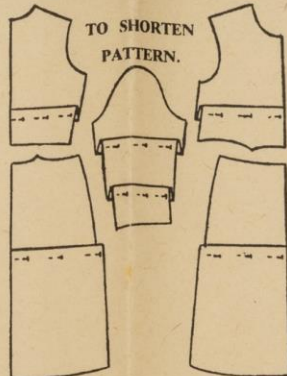
TAILORS TACKS.



Using a double thread take stitches through perforations and material. Make two loops at each perforation, then cut through loops and remove paper pattern.

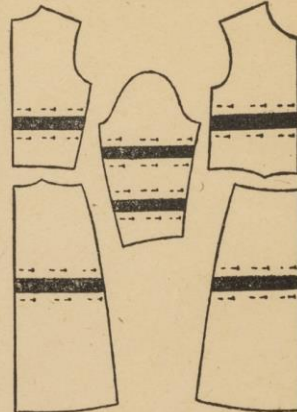
INSTRUCTION DETAILS

TO SHORTEN PATTERN.



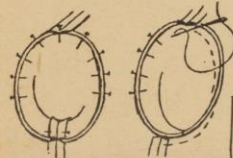
Make corresponding tucks across front and back bodice at bust of paper pattern. Make tucks across skirt pieces, below the hips as shown. For sleeves, shorten pattern pieces above and below elbow.

TO LENGTHEN PATTERN.



Cut pattern pieces across bodice front and back at bust, skirt pieces below the hips, and sleeve above and below, elbow. Lay pattern on paper, spread the pieces to required size and pin firmly in position.

TO SET IN SLEEVE.



Turn sleeve to right side. Turn garment to wrong side. Insert sleeve into armhole right sides facing. Match notches and under-arm seam. Pin as shown in sketch, adjust ease, tack and stitch.

BIAS FACING.



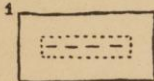
Tack and stitch to garment right sides facing, turn out, press. Slip-stitch other edge to fabric.

TO PLACE PATTERN TO STRAIGHT OF MATERIAL.

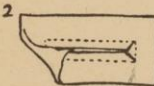


Two large O O in pattern pieces show lengthways straight of material. Grain line must be parallel with selvages.

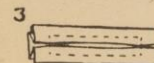
BOUND BUTTONHOLES.



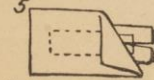
1. Cut a bias strip 1 1/2 in. wide 1 in. longer than the length of finished buttonhole. Tack centre of strip over position of buttonhole, right sides together. Stitch 1/4 in. each side of tack and across each end.



2. Cut through centre of tack to 1/4 in. from ends and diagonally to corners. Pull strip through to inside.



3. Form inverted pleat at ends on inside and sew.



5. Tack facing over buttonhole, wrong sides together.

Sew it with...



DEWHURST'S SYLKO MACHINE TWIST

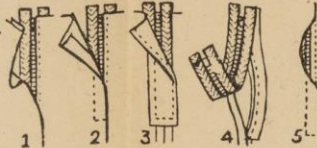
100 YARDS REELS

A Product of

ENGLISH SEWING COTTON CO. LTD.

ZIP FASTENERS.

- SKIRT.** Face front edge of opening with a 1 1/2 in. wide cross-way strip, turn facing to inside and tack. Turn under 1/4 in. on back opening, press. Tack fastener to back, fold of material to centre of zip and top of fastener 1/4 in. below top of skirt, stitch.
- Fold front skirt over back, fold of skirt matching line of stitching on back skirt, tack and stitch close to teeth and across lower end.
- Fabric guard under fastener a strip of material 2 ins wide 1 in. longer than fastener. Fold in half lengthways wrong sides together, stitch along fold line. Tack raw edge of guard to back edge of zip inside, edges even, keep top of guard level to top of skirt. Stitch guard to back edge of zip and at lower edge holding away from skirt.
- DRESS.** Face front edge with a 1 1/2 in. wide crossway strip, turn facing to inside and tack. Turn under 1/4 in. on back opening, tack. Tack this edge over closed zip, stitch.
- Tack front edge over back, fold edge matching line of stitching on back. Stitch close to teeth, and across top and lower edges.

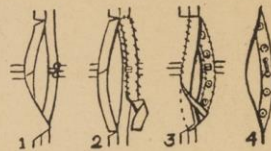


TO MAKE HIPLINE SMALLER.

A. Make a graduated tuck from waist to hem, tapering to nothing at waist as indicated by dotted line.

TO ENLARGE HIPLINE.

B. Cut pattern piece through from waist to hemline, place over paper and spread to the required size, as shown in sketch, pin firmly.



- PLACKET.**
- Snip seam turning at top and lower edges of back. Fold turning on front edge to inside and stitch hook to centre.
 - Face in front edge.
 - Cut a strip 2 in. wide, sew one edge to back edge right sides together, turn in other edge of strip and stitch over turnings. On wrong side stitch edges together at top and lower edges.
 - Sew eye to back to match hook on front. Fasten remainder of placket with press studs.

WORKED BUTTONHOLES.

- Buttonholes are worked after garment is completed. Reinforce each one with two rows of machine stitching before cutting.
- Cut buttonhole. Starting at inner edge, work buttonhole stitches down one side, continue round outer end with fanwise stitches and down other side.
- At unworked end of buttonhole make several stitches across cut for bar tack. Now work buttonhole stitches over the threads.

PLEASE READ ALL INSTRUCTIONS CAREFULLY BEFORE YOU CUT

Vogue Pattern No. 6321

© Vogue

COMPARATIVE SCALE OF MEASUREMENTS

WOMEN'S SIZES	
Size	32 34 36 38 40 42 44 46
Bust (Place tape over bust, just slightly higher in back)	32 34 36 38 40 42 44 46
Waist (7 in. below normal waistline)	26 1/2 28 30 32 34 36 38 40
Hip (7 in. below normal waistline)	35 37 39 41 43 45 47 1/2 50
Sleeve length (undersleeve)	17 17 1/2 18 18 1/2 19 17 1/2 17 1/2

See pattern envelope for back length and width at lower edge.

MISSES' SIZES	
Size	10 12 14 16 18 20
Bust (Place tape over bust, just slightly higher in back)	28 30 32 34 36 38
Waist	24 25 26 1/2 28 30 32
Hip (7 in. below normal waistline)	31 33 35 37 39 41
Sleeve length (undersleeve)	16 1/2 16 1/2 17 17 1/2 18 18

See pattern envelope for back length and width at lower edge.

SEPARATE SKIRTS	
Waist	24 26 28 30 32 34 36 38
Hip (7 in. below normal waistline)	33 35 37 39 41 43 45 47 1/2

See pattern envelope for length and width.

ALTERATIONS

Before placing pattern on material, pin pattern together. Pin it to the wearer, to find out how much alteration (if any) is needed.

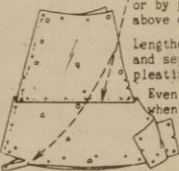
6321

For View B, cut off lower edge on small o line, as indicated.

Shorten pantie at lower edge or by pleating across pattern above crotch, as required.

Lengthen at same places; cut and separate instead of pleating pattern.

Even up shaped seam-lines when altering.



SUGGESTIONS FOR HANDLING MATERIALS

SHRINKING: Be sure that woollens and washables are properly shrunk before cutting. **SAGGING-BIAS SEAMS:** Various materials sag differently when cut bias or circular. Bias seams must be handled carefully. Keep sewing machine tension loose and the stitch fairly long.

PRACTICAL CUTTING AND MARKING INSTRUCTIONS

Discard pieces of pattern you do not intend to use. Place material on a hard, flat surface. Straighten both ends of material by tearing or drawing thread and cutting.

Compare pattern carefully with Picture Diagram on reverse side for straight of goods (—o—) perforations.

Place pattern pieces on material exactly as shown in the cutting chart for your size and width of material.

When cutting chart shows material opened out and pattern is given for right side only, reverse the pattern for left side, which is indicated on the chart by broken lines.

Pattern pieces are placed on right side of fabric except when on folded fabric—then on wrong side.

TO MARK WITH CHALK AND THREAD—

(Fig. 1) Pin along seam lines and through all construction perforations, always consulting Picture Diagram of pattern. Pin corners accurately. Keep pins close enough to retain exact shapes of lines. Cut material, following edge of pattern and cut notches.

(Fig. 2) When material is double, mark with tailor's chalk through perforations on pattern. Mark other side at each pin.

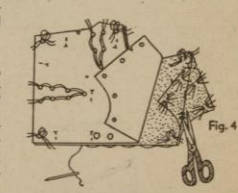
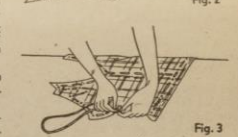
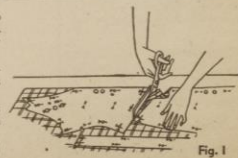
For single thickness, do not mark through perforations—mark along pins on wrong side only.

(Fig. 3) Run marking threads along center front and back. Remove pattern and run thread lines along chalk marks.

TO MARK WITH TAILORS' TACKS—

Use fewer pins in laying out pattern and do not pin through perforations. Cut as in Fig. 1. Run thread lines down center front and center back; remove after garment is finished.

For tailor's tacks—Use soft, clinging thread—a different color for each type of perforation. Take 2 loose stitches through each perforation. Remove pattern. On double material raise upper layer and clip thread through center leaving tuft on each side.



NO. 6321

2 PIECES IN THIS PATTERN
CUT IN SIZES 25—27—28—30—32—34
WAIST MEASURE

6321—PANTIE "EASY-TO-MAKE"

Circular pantie with optional lace inset at sides or ribbon pulled through beading and lace edging.

YARDAGE [Without Nap]

WAIST MEASURE

	25	27	28	30	32	34
--	----	----	----	----	----	----

VIEW A—With or Without Lace Insets

32"	1 1/2	1 1/2	1 1/2	1 1/2	1 1/2	1 1/2
35"	1 1/2	1 1/2	1 1/2	1 1/2	1 1/2	1 1/2
39"	1 1/2	1 1/2	1 1/2	1 1/2	1 1/2	1 1/2

2 Lace Insets—each about 1 1/2" x 7"

VIEW B

32"	1 1/2	1 1/2	1 1/2	1 1/2	1 1/2	1 1/2
35"	1 1/2	1 1/2	1 1/2	1 1/2	1 1/2	1 1/2
39"	1 1/2	1 1/2	1 1/2	1 1/2	1 1/2	1 1/2

1/2" Beading

2 1/4	2 1/4	2 1/4	2 1/4	2 1/4	2 1/4	2 1/4
-------	-------	-------	-------	-------	-------	-------

1/2" Lace Edging

3	3	3 1/4	3 1/4	3 1/4	3 1/4	3 1/4
---	---	-------	-------	-------	-------	-------

1/2" Ribbon

3 1/4	3 1/4	3 1/4	3 1/4	3 1/4	3 1/4	3 1/4
-------	-------	-------	-------	-------	-------	-------

Length of pantie at side (inches)

16 1/2	16 1/2	17	17 1/2	17 1/2	17 1/2	17 1/2
--------	--------	----	--------	--------	--------	--------

Width at lower edge of one leg of pantie in size 28 is about 1 1/4 yards.

1 Without nap or pile, or with design in both directions.

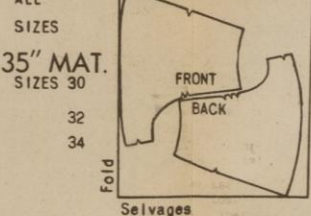
No hem allowed.

If the cotton or linen fabric used is Sanforized—shrink, no allowance for shrinkage need be made.

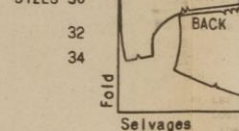
CUTTING CHARTS—ARRANGE PIECES AS SHOWN—ALL SEAMS ALLOWED

6321 VIEW A OR B

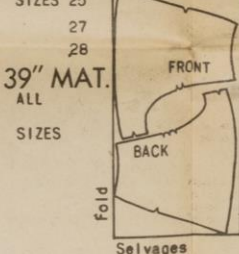
32" MAT. Selvages



35" MAT. Selvages



35" MAT. Selvages



39" MAT. Selvages

