

Visual Story

For Dartmoor: A Radical Landscape

A lot of what you see at RAMM stays the same, or changes just a little bit at a time. Some rooms are used for exhibitions that are on a for a short-term basis – from two weeks up to four months.

As you may know, an exhibition is a display on a particular theme. The exhibition *Dartmoor: A radical landscape* is a temporary exhibit from the 19th of October and the last day will be the 23rd of February 2025. This exhibition is ticketed, and entry is allowed from 10am to 4:30pm.

Tickets

Most of the museum is free, but to get into the *Dartmoor: A Radical Landscape* exhibition you will need to purchase a ticket. You can book [these online](#) before you come, or you can get them when you arrive at the reception desk which is pictured below or in the gallery.

The ticket prices are: - full price standard tickets are £6, £4 NUS cardholders and MA members, £3 ArtFund, under 19's and carers go free. Pre-booked groups of all ages from Exeter College and the University of Exeter are also free.

You can also purchase the *Dartmoor: A Radical Landscape* A5 postcard pack which features 10 images and a brief induction to the exhibition. These can be bought [online](#) or at Garden Reception. They can be collected on arrival from the Garden Reception desk pictured below.

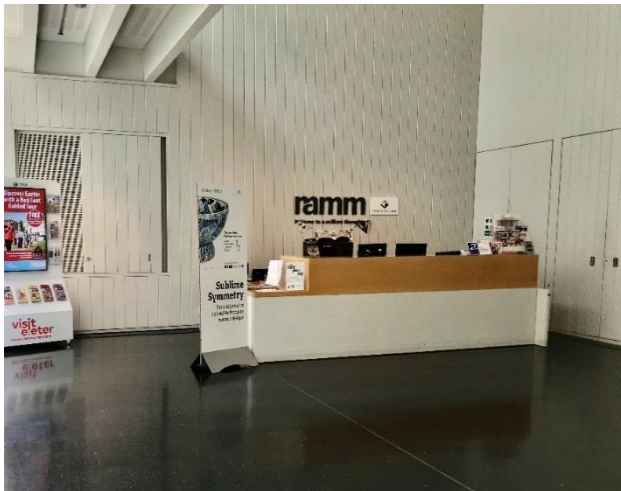


Figure 1: A picture showing the Garden Reception desk where you can purchase and collect tickets.

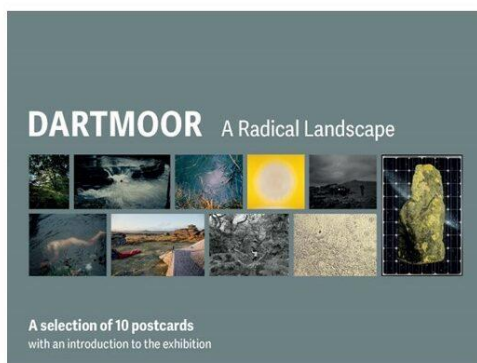


Figure 2: A picture of the selection of 10 postcards which is featured in the ticket pack online.

Arriving

The entrance to the *Dartmoor: A Radical Landscape* exhibition is through Gallery 22.

Gallery 22 will have staff on the door to check and sell entry tickets. That person will double as an invigilator should you have any additional queries. There is signage outside on the corridor with information about tickets and how to purchase them. Any additional information can be accessed [online](#).

Opposite the signage banner on the wall there is a map highlighting toilets, stairs and lifts alongside some leaflets about what's on at the RAMM and a floorplan showing each level.

There is a ticket desk to the right of the door. Following the desk to the left there are several photos with text alongside explaining the inspiration and artists themselves.



Figure 3: The banner outside the Dartmoor exhibit.



Figure 4: The entrance to the exhibit directly right from the banner.



Figure 5: The floor plan and leaflets available upon entry to the exhibit.



Figure 6: The desk upon arrival and the first room of the exhibit.

What's in the exhibition?

This exhibition explores Dartmoor's landscape through photography, film and land art. Showing artwork from 1969 to 2024, it demonstrates Dartmoor's attraction to artists who through photography explore current issues such as climate crises and access rights.

On display is Land Art from the 1960s and 70s by artists Nancy Holt, Richard Long, and Marie Yates, provide the context for this innovative exhibition. Central to the exhibition are large-scale, experimental photography by critically acclaimed artists Susan Derges and Garry Fabian Miller.

RAMM has also commissioned two major new artworks by internationally renowned artist Alex Hartley and filmmaker Ashish Ghadiali whose work is inspired by RAMM's Dartmoor-related collections.



Figure 7: Image showing some of what to expect at the exhibit.

What to expect

The display includes photography, videos and objects. When you enter Gallery 22, there is staff on the door. They will direct towards the left of the gallery where the exhibit starts.

There is a projection space in Gallery 21 which shows a video with sound by Ashish Ghadiali.

Additionally, there are three works on the wall by Tanoa Sasraku and Jo Bradford which are located left of the door. These will be barriered as they are unglazed and visitors should not touch these. There will also be benches located throughout this exhibit.

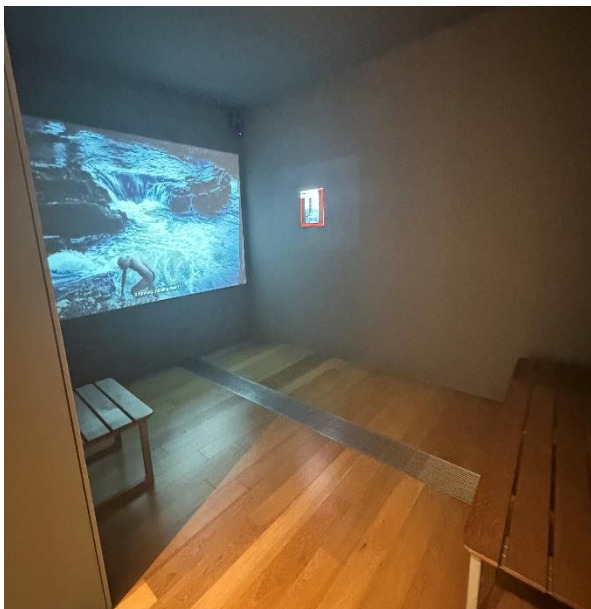


Figure 8: Image of the projection room with seating available.



Figure 9: Image of the benches available through the exhibition.

Interactives

There are several interactives for this exhibit including a resource area in 'Friends Kitchen' with seating, shelves of books, a timeline of artists and events, an iPad with a map of Dartmoor showing locations of artworks and a TV film about the exhibition with sound, subtitles and two sets of headphones.



Figure 10: Image of a TV screen playing a video. There are two sets of headphones available and a bench.

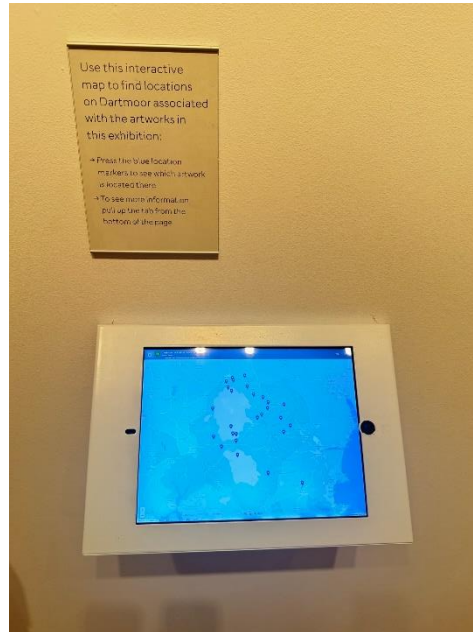


Figure 11: Interactive map of Dartmoor on iPad.



Figure 12: The seated area with book.



Figure 13: Display of the available resources.

Lighting

The exhibition has low lighting to protect the artworks. There is a dark projection space in this gallery showing a two-channel work by Ashish Ghadiali with sound.



Figure 14: The lighting in gallery and projection room.



Figure 15: The projection located in gallery and its lighting.

Quiet room

If you need to go somewhere quiet for any reason, ask a member of staff. They will take you to a quiet place.

Ear defenders

Anyone can borrow ear defenders at RAMM. You can ask at the Garden Reception desk. Please give them back when you leave. They are cleaned regularly between visitors.



Figure 16: Ear defenders.



Figure 17: Garden Reception.

Here to help

Our volunteers and staff will always be present in the exhibition to answer your questions and help. Our staff can be identified by the blue, green or purple lanyards they wear. Our volunteers will be wearing a pink lanyard.



Figure 18: Member of RAMM staff wearing a green lanyard.



Figure 19: A RAMM volunteer wearing a pink lanyard.

Visual Stories and Getting to RAMM

RAMM has a Visual Story about getting to the museum and what you will find around the building. You can ask someone at Reception for a copy, or you can download it from the website before you come. Visit our [Access Page](#) for more information.